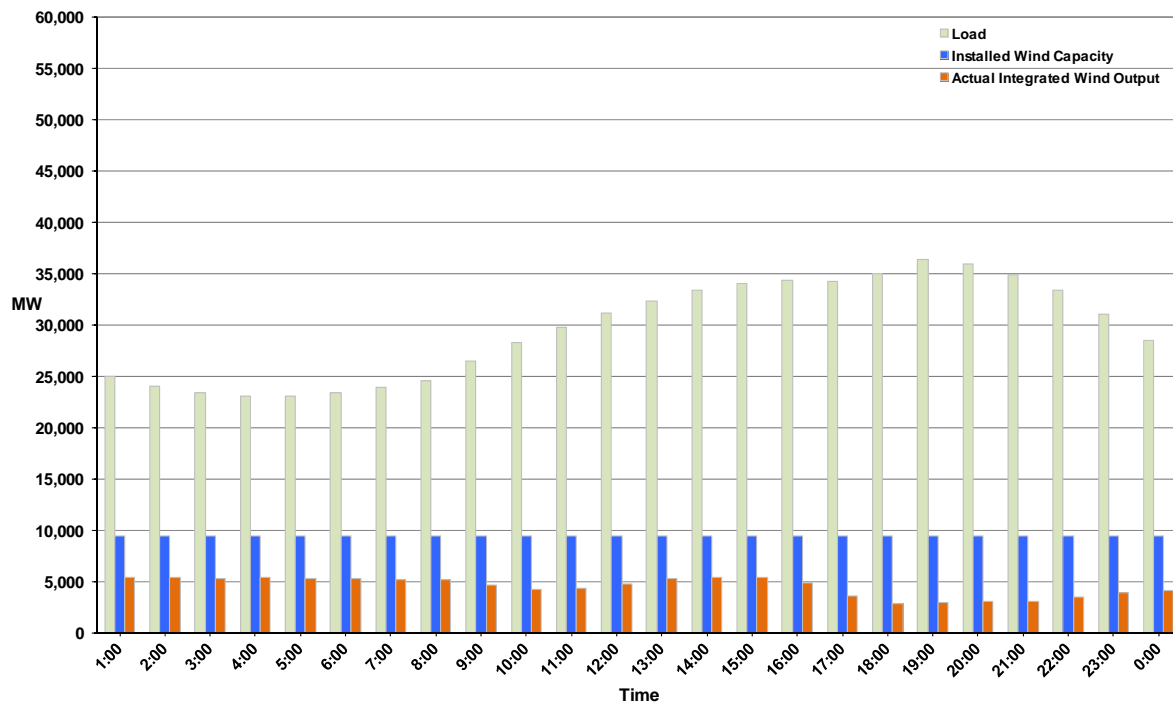




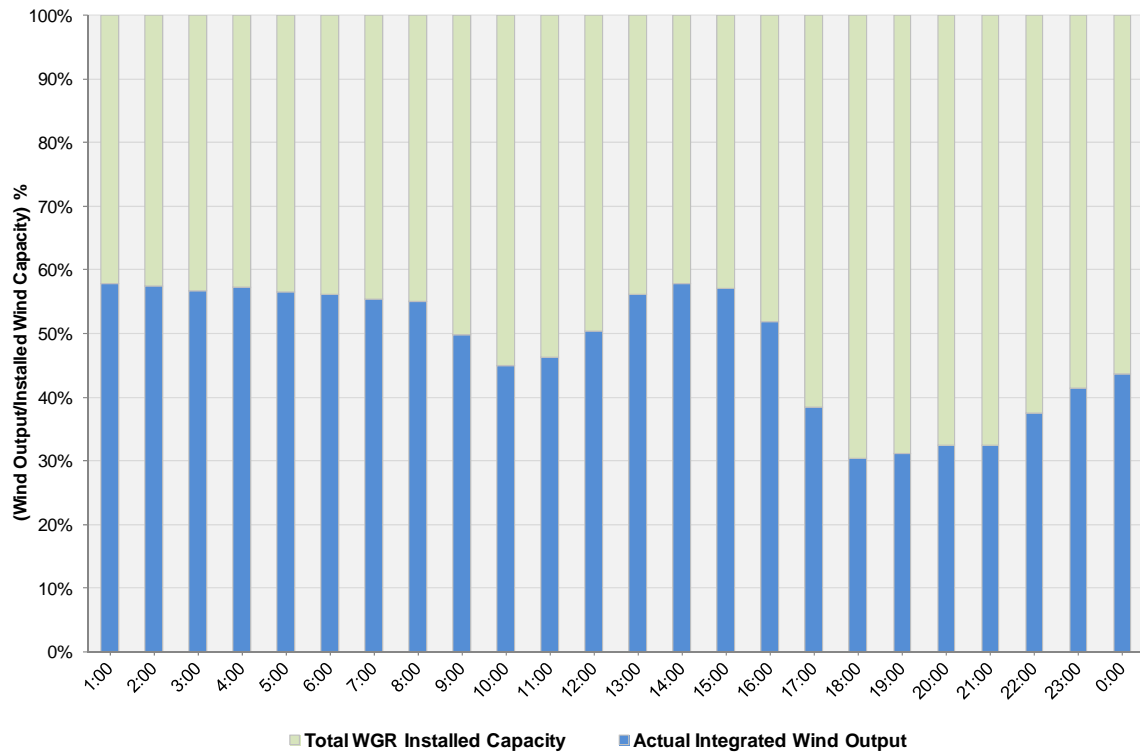
## ERCOT Grid Operations Wind Integration Report: 11/13/11

Peak Load	<b>36,410 MW</b>
Load Peak Hour	<b>19</b>
Wind over Peak	<b>2,931 MW</b>
Wind Record 10/07/11	<b>7,400 MW</b>
Max Wind Value	<b>5,761 MW</b>
Wind Peak Time	<b>14:05</b>
Wind Integration %	<b>16.97%</b>

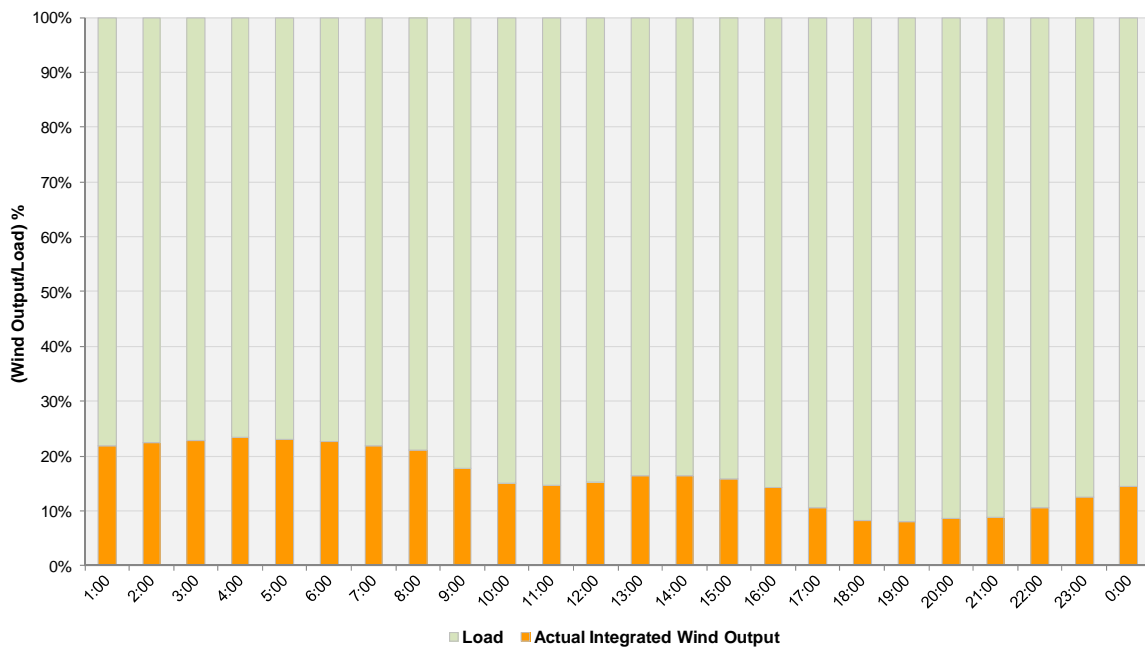
**Hourly Average Actual Load vs. Actual Wind Output  
11-13-2011**



**Actual Wind Output as a Percentage of the Total Installed Wind Capacity**  
**11-13-2011**



**Actual Wind Output as a Percentage of the ERCOT Load**  
**11-13-2011**



ERCOT Load vs. Actual Wind Output 11/6/2011 - 11/13/2011

